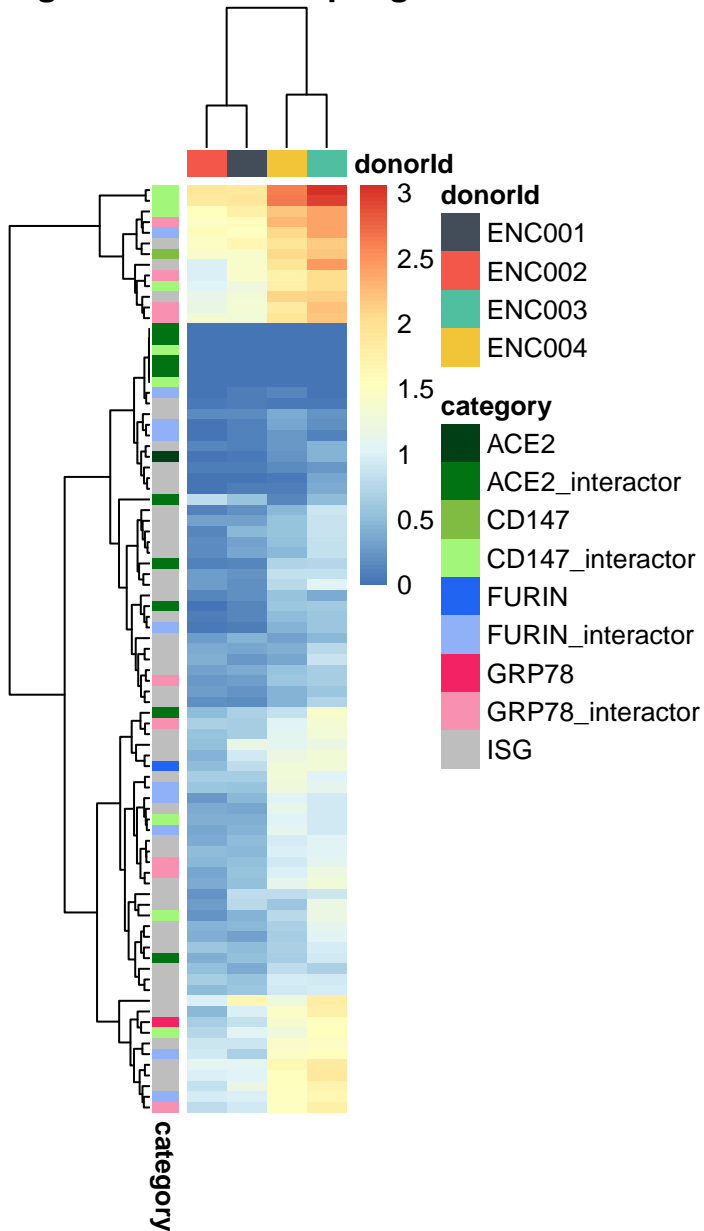
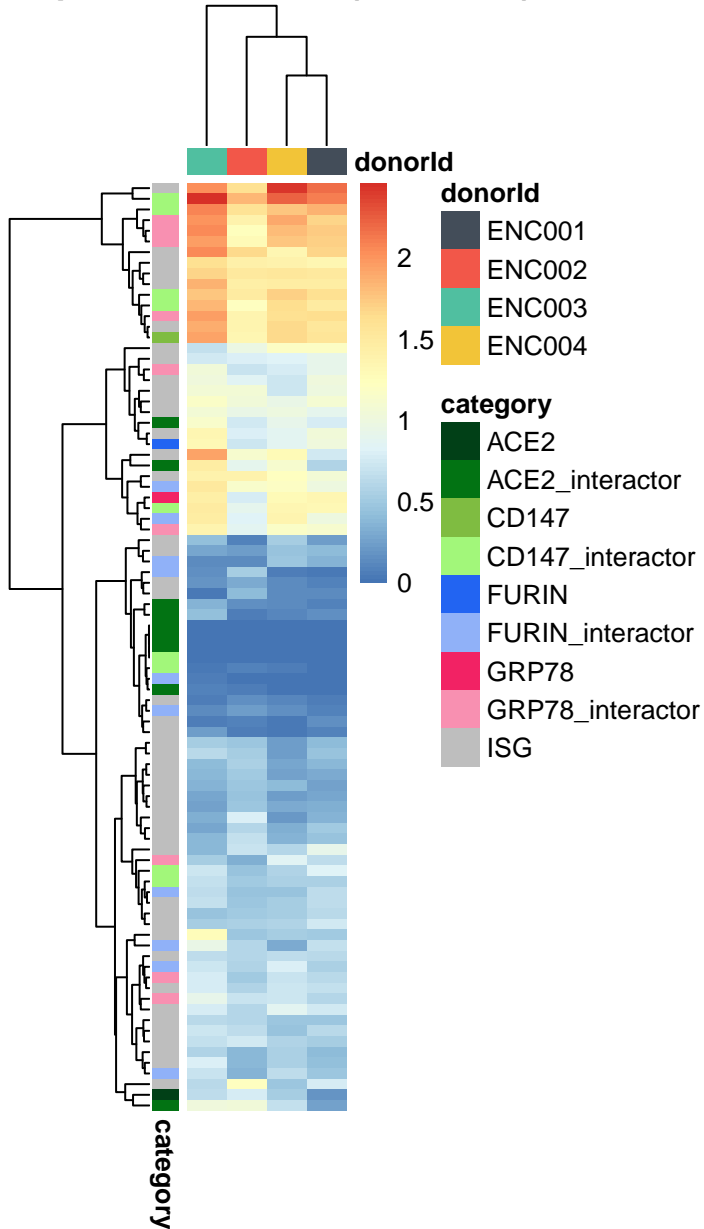


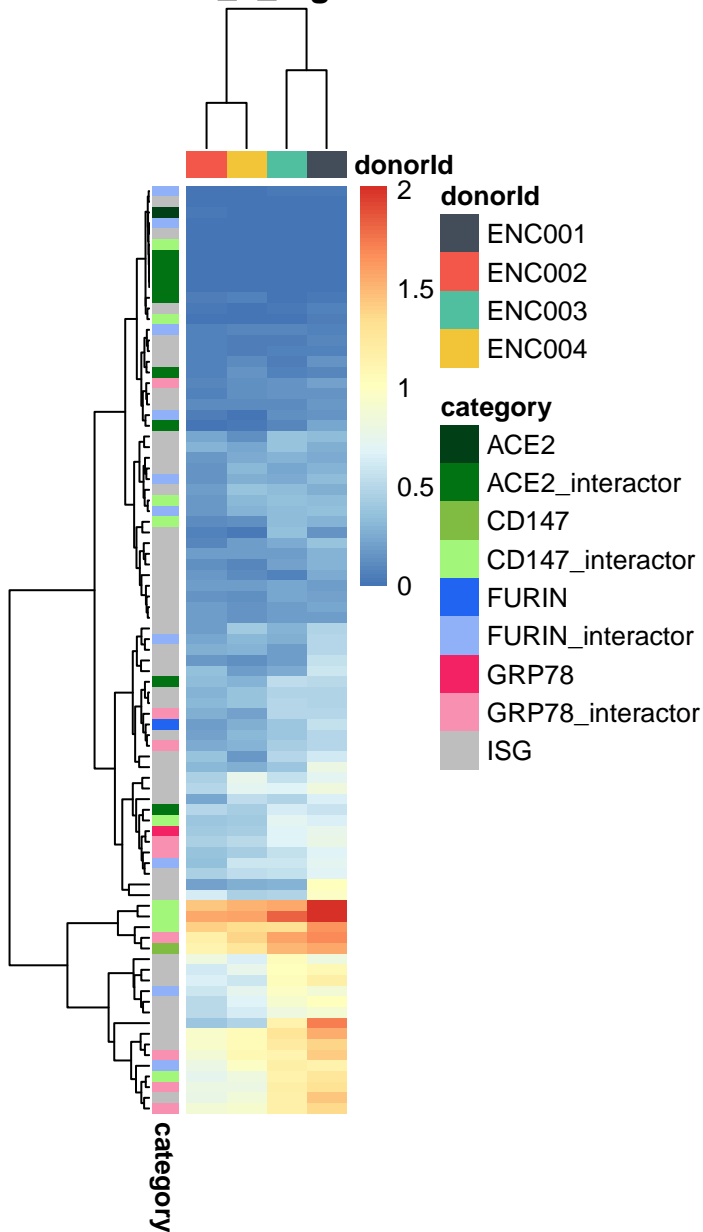
Esophagus _ _ Gastroesophageal_Junction



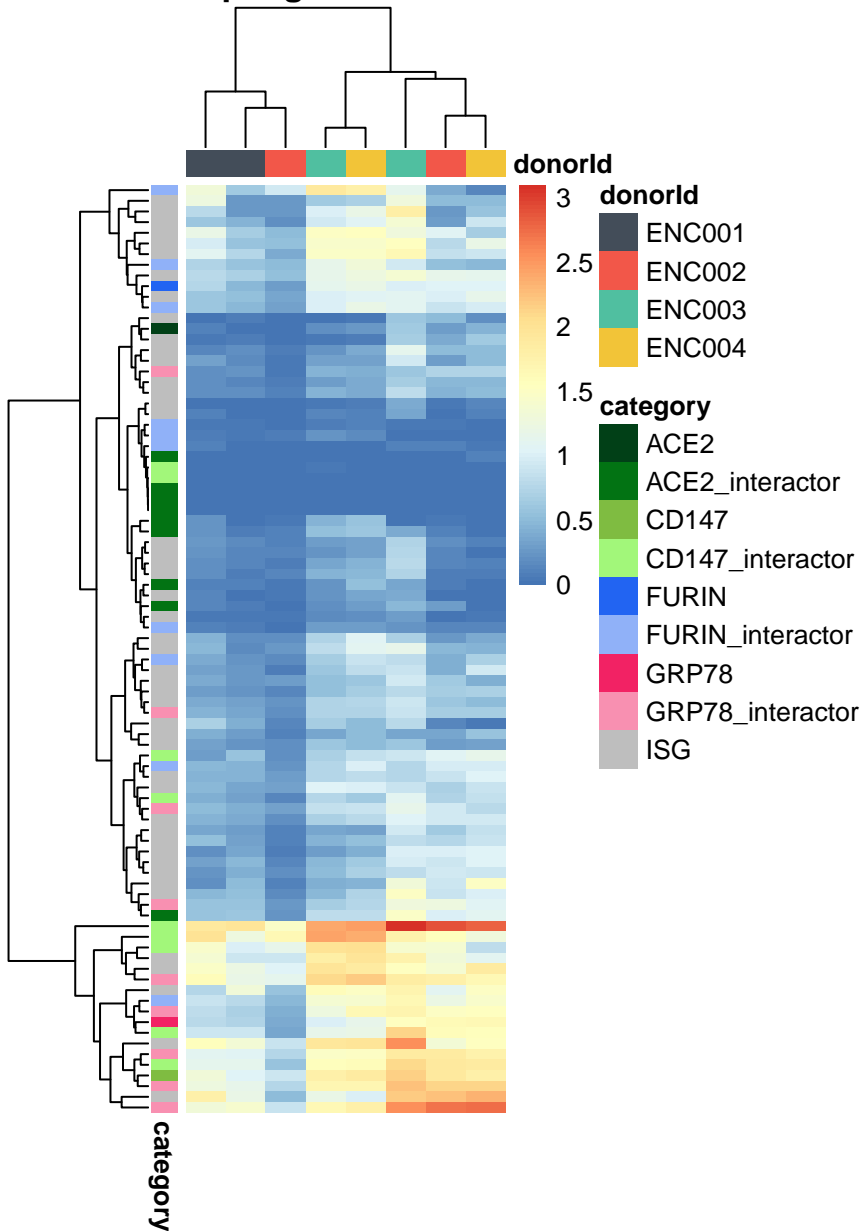
Adipose_-_Visceral_(Omentum)



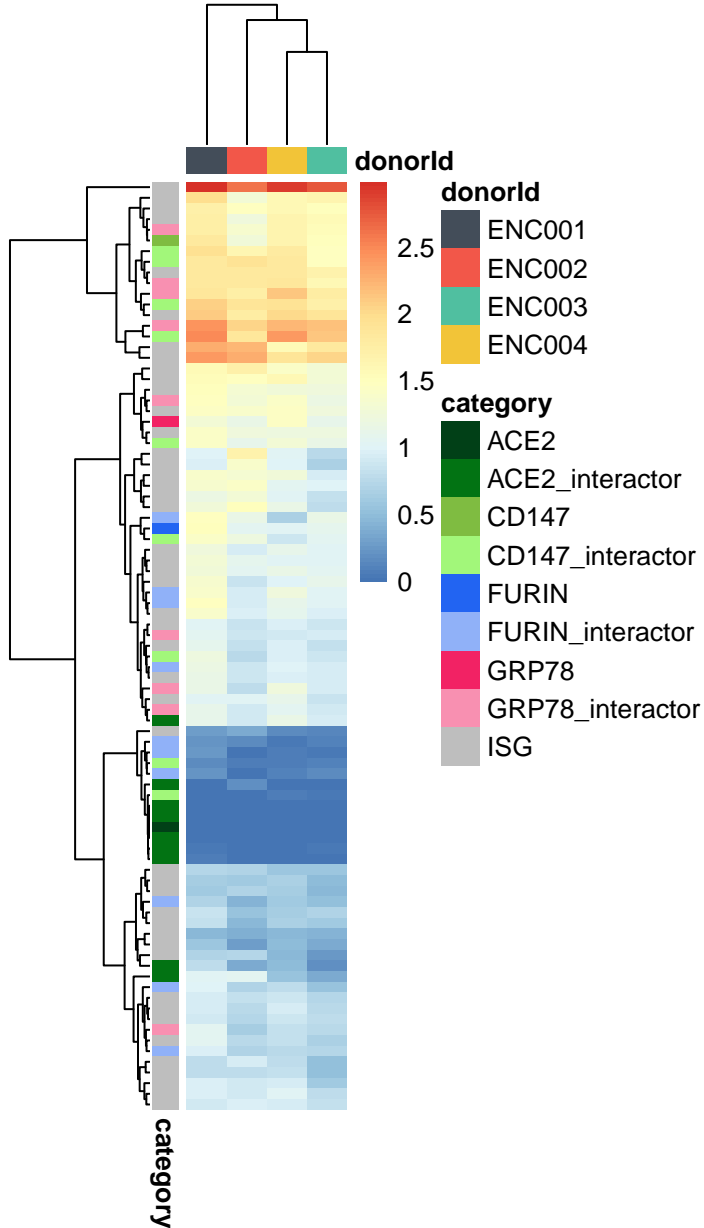
Colon_-_Sigmoid



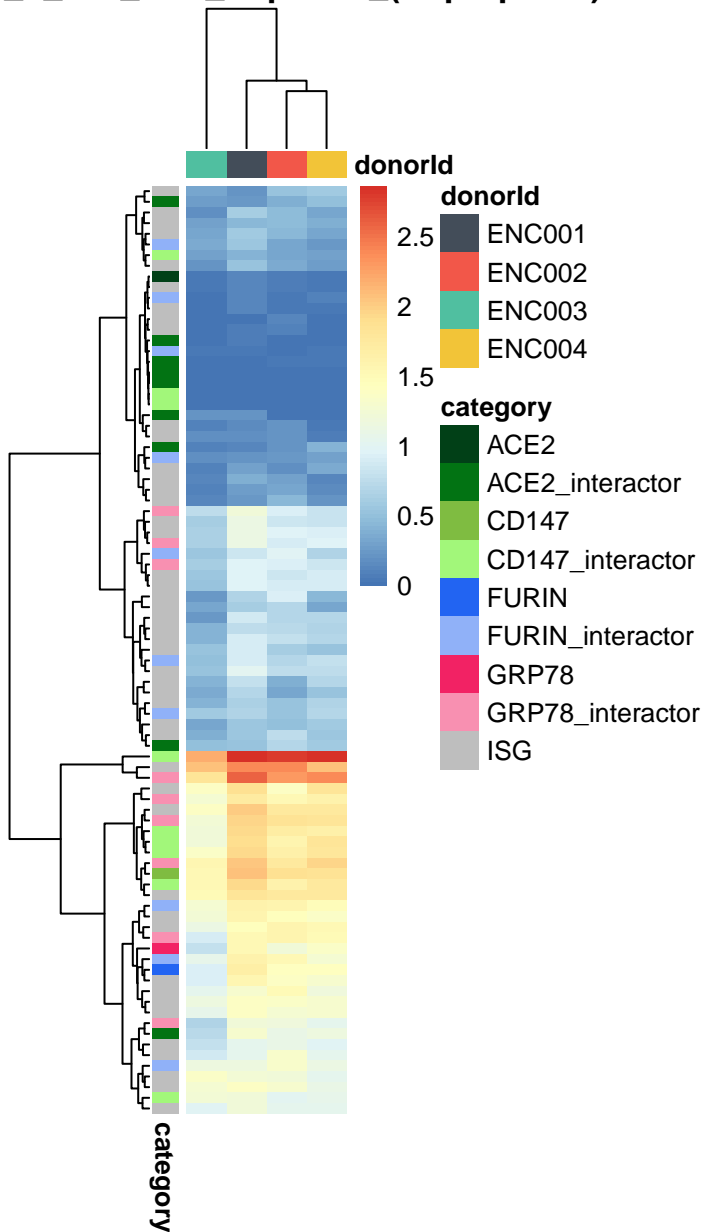
Esophagus_-_Mucosa



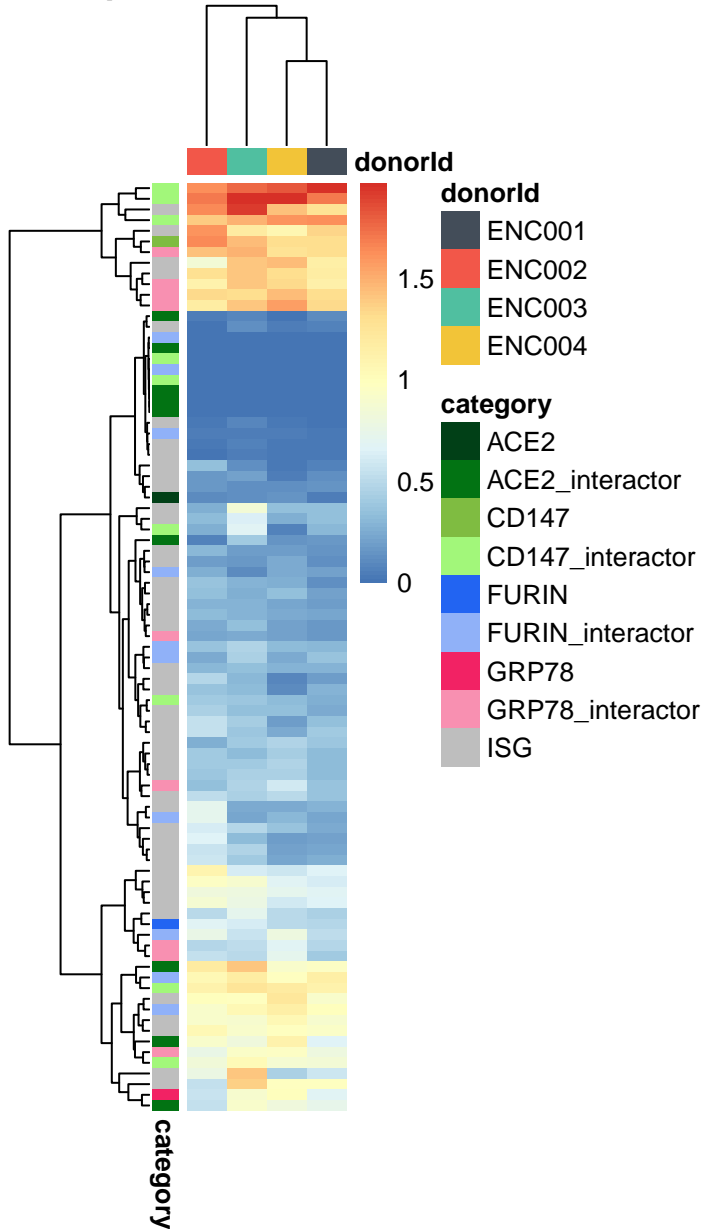
Spleen



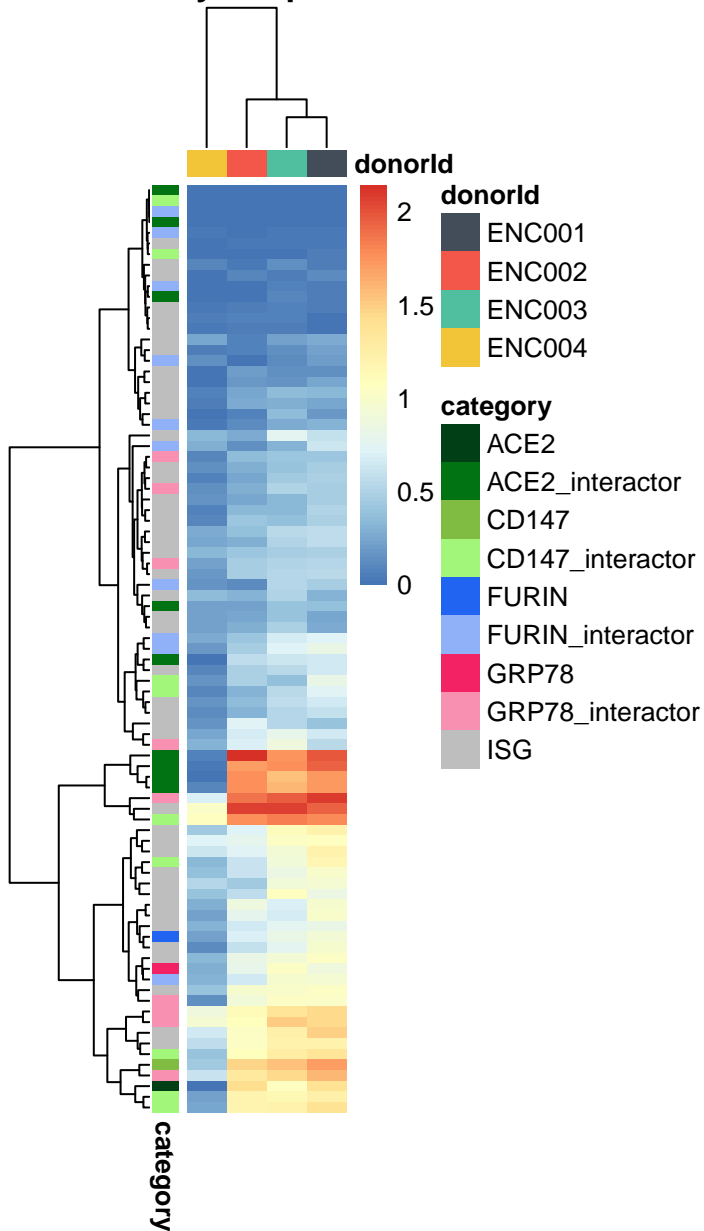
Skin__Not_Sun_Exposed_(Suprapubic)



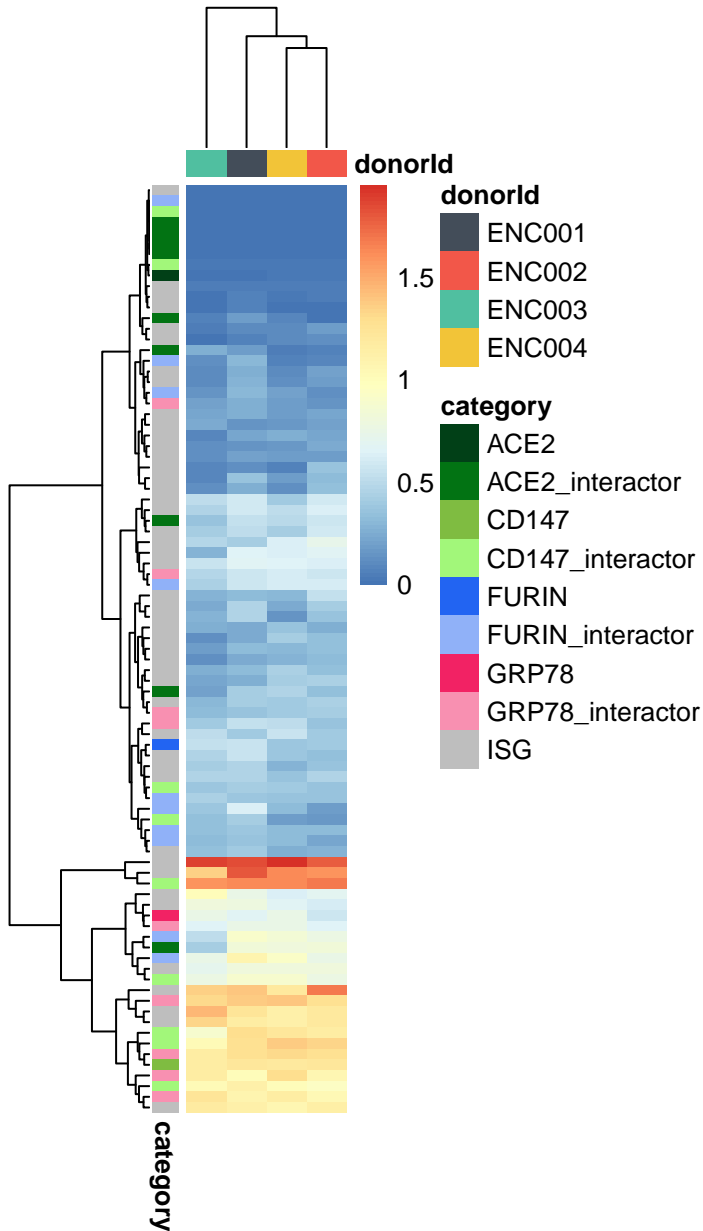
Adipose_-_Subcutaneous



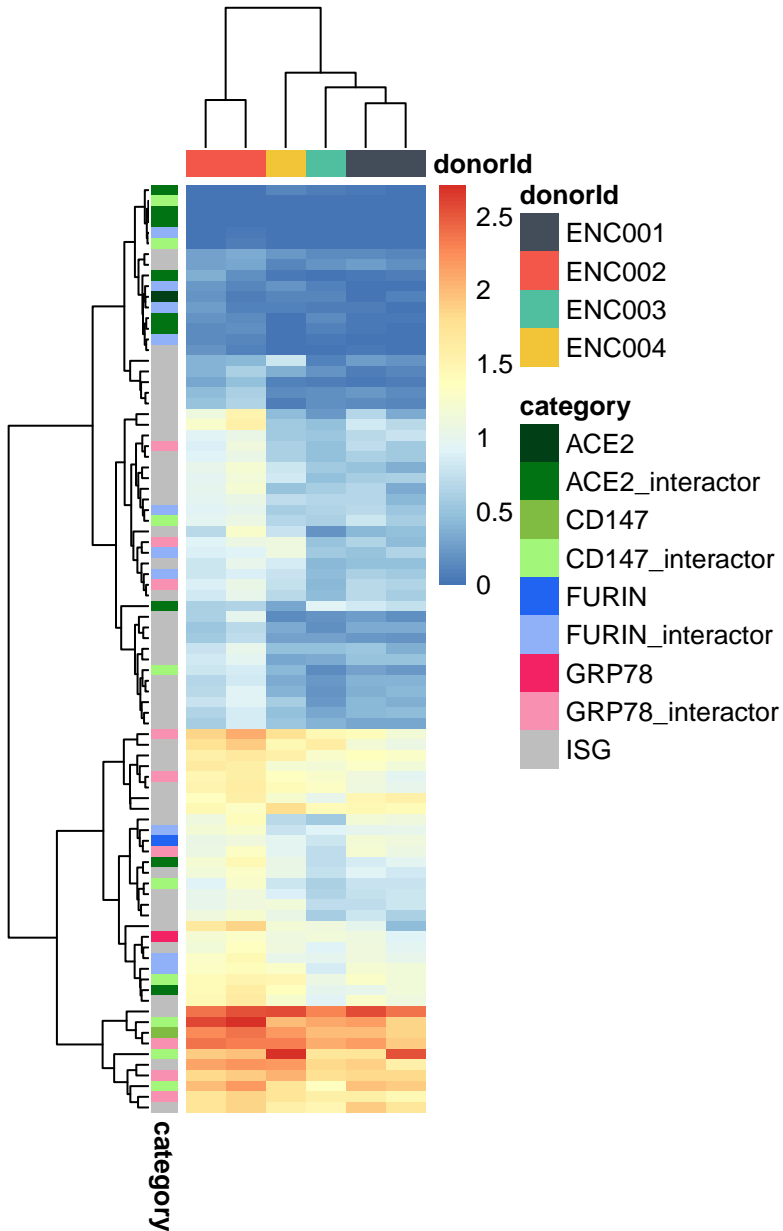
Peyers_patch



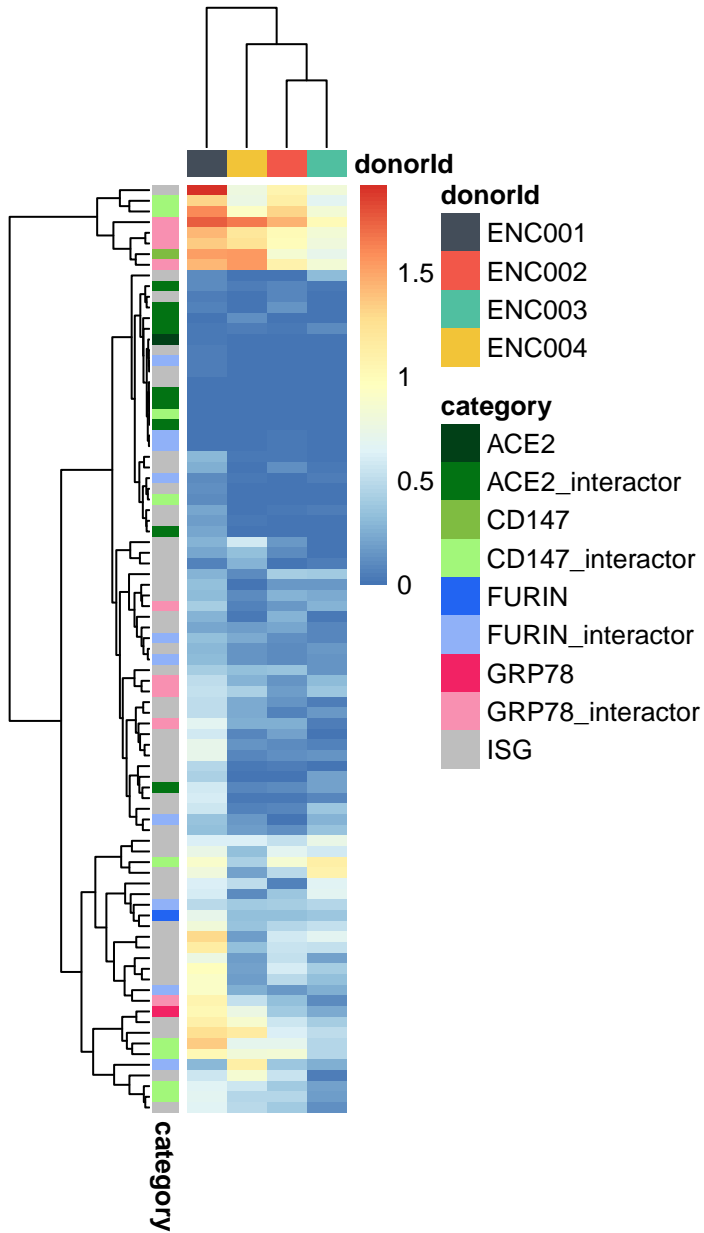
Nerve_-_Tibial



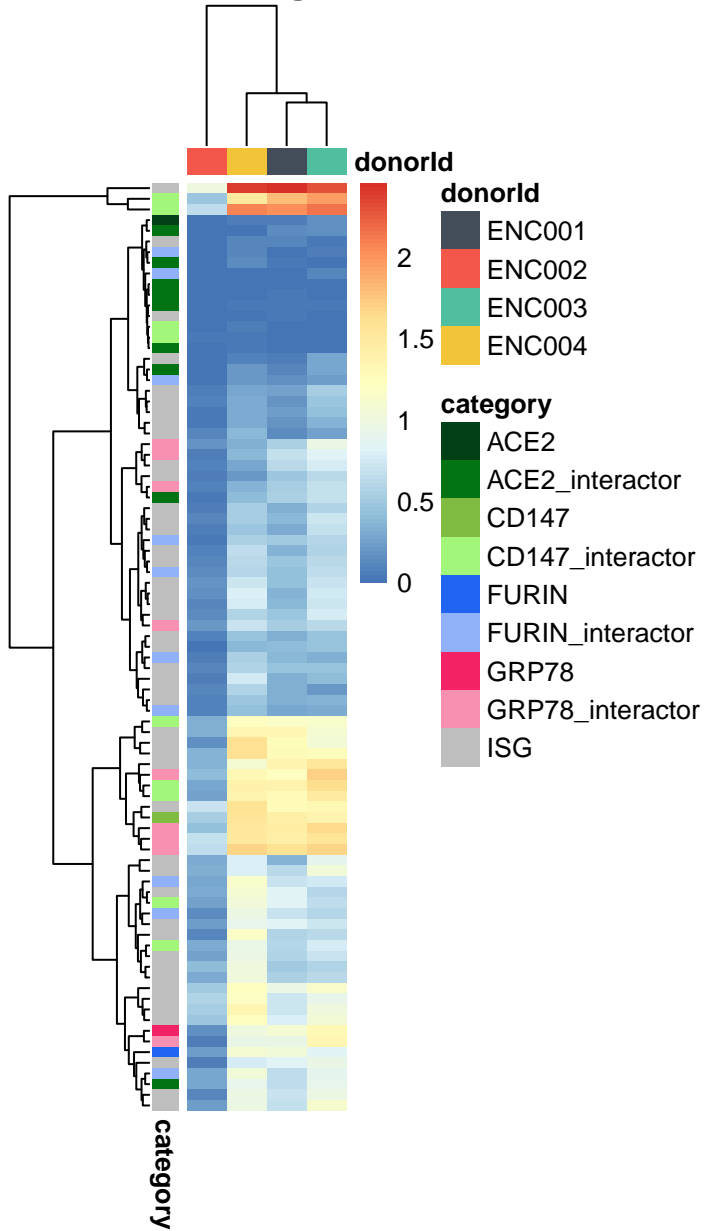
Adrenal_Gland



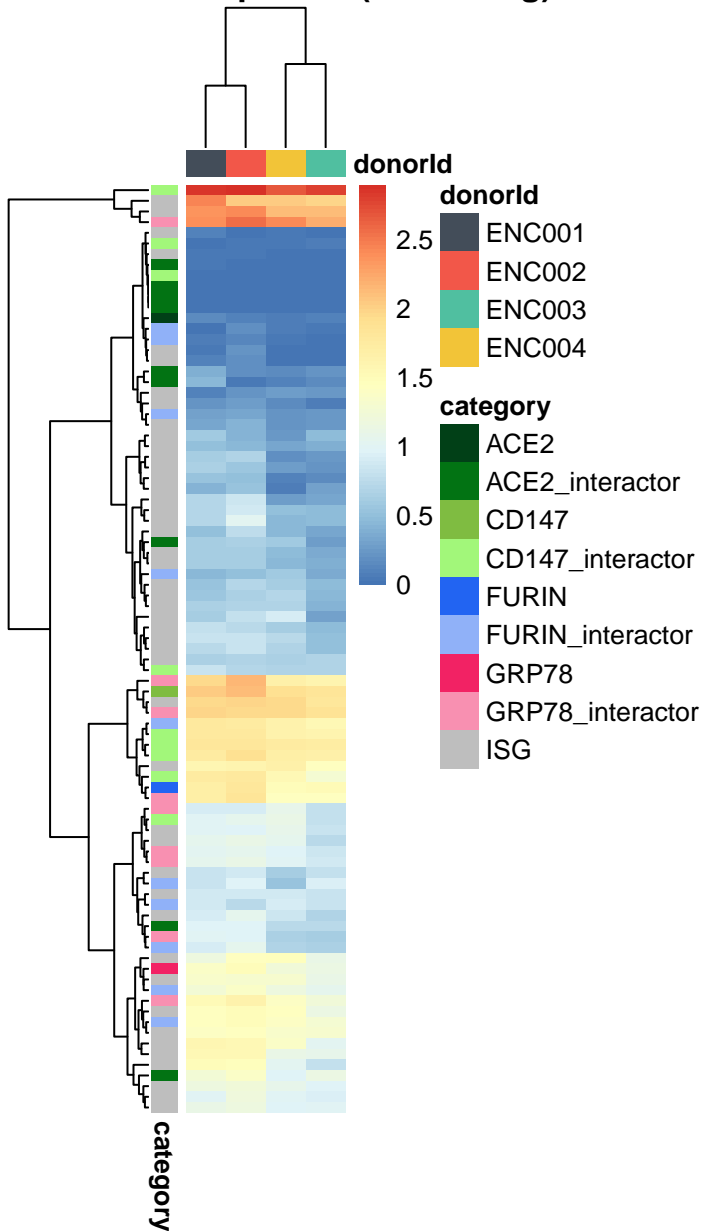
Stomach



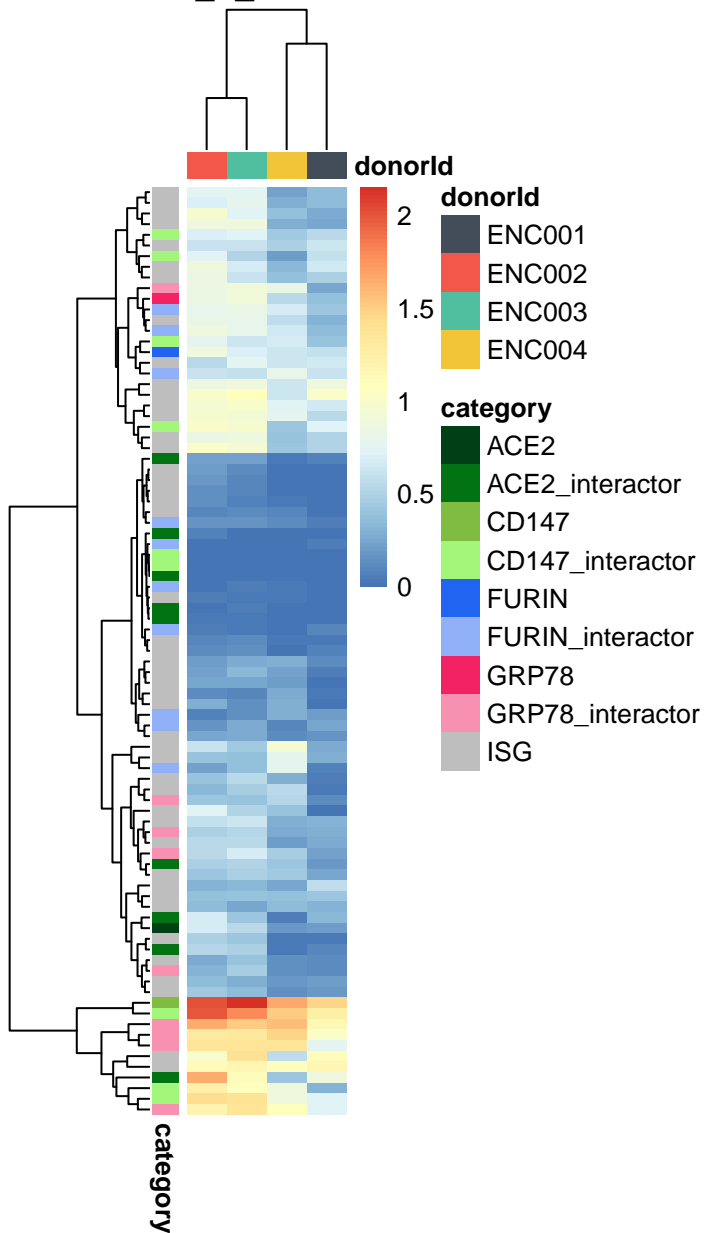
Lung



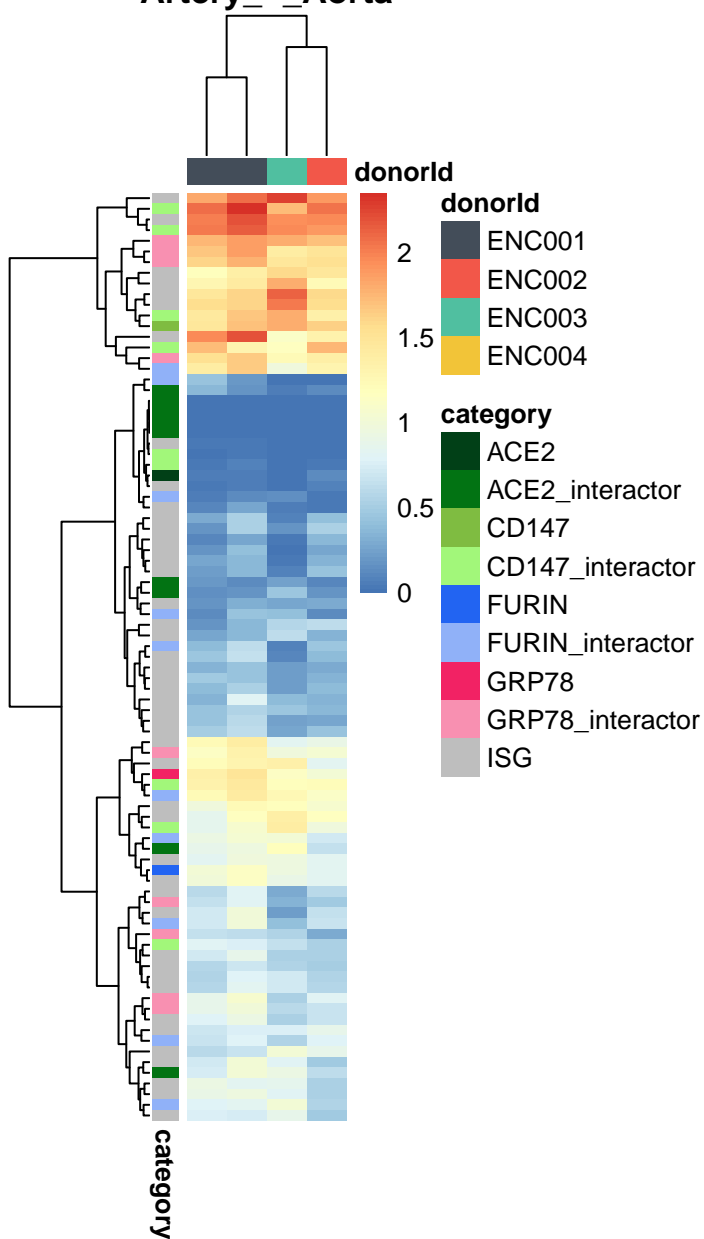
Skin__Sun_Exposed_(Lower_leg)



Colon_-_Transverse



Artery__Aorta



Muscle _ Skeletal

