

ERC *Drosophila melanogaster*

03/06/2015

Outline

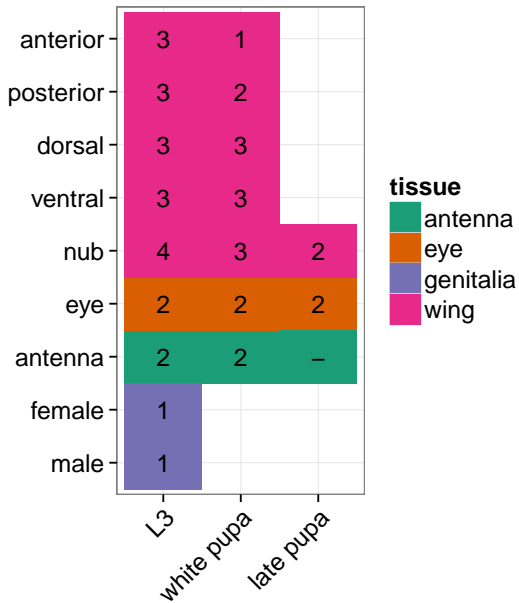
Overview of RNA-seq samples

Isoform usage

Antisense

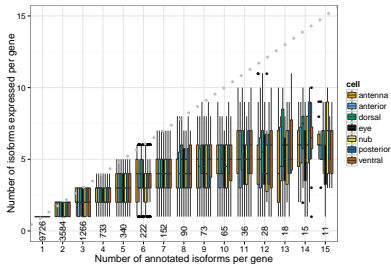
Updated RNA-seq samples

Overview of processed RNA-seq samples

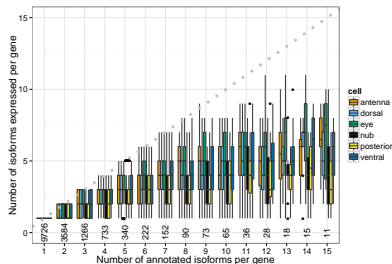


Number of isoforms expressed vs annotated

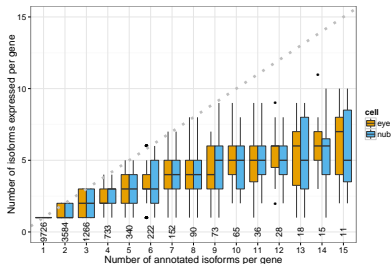
L3



white pupa

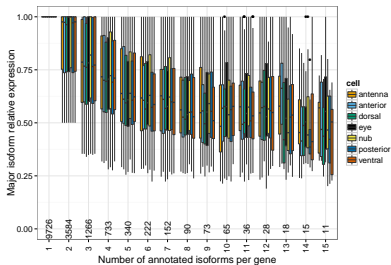


late pupa

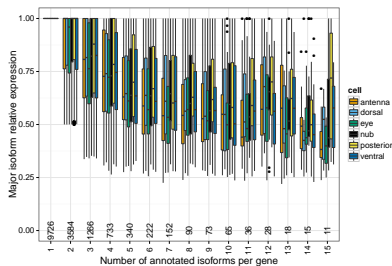


Expression of the major isoform

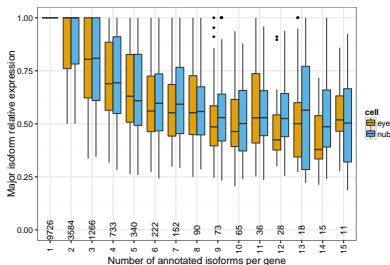
L3



white pupa

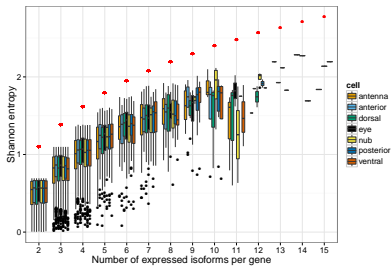


late pupa

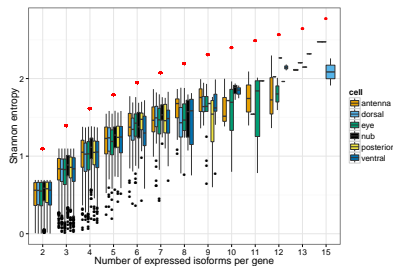


Shannon entropy of isoform expression

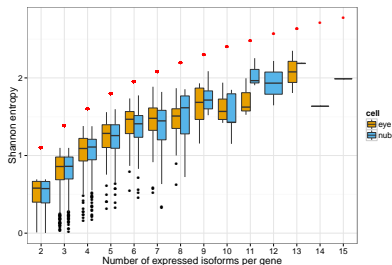
L3



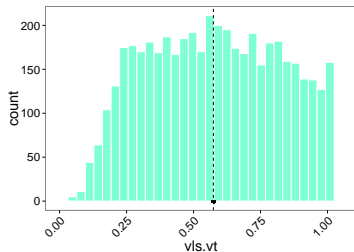
white pupa



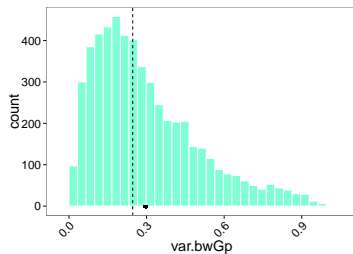
late pupa



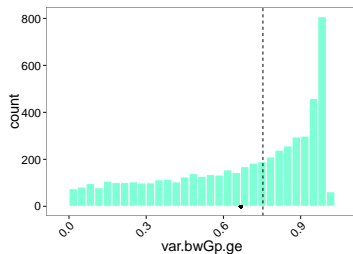
all replicates



group by age



- ▶ vls.vt (i.e. gene expression contribution estimate)
- ▶ var.bwGp (i.e. variance explained by group classification)
- ▶ var.bwGp.ge (i.e. gene expression contribution in variance explained by group classification)



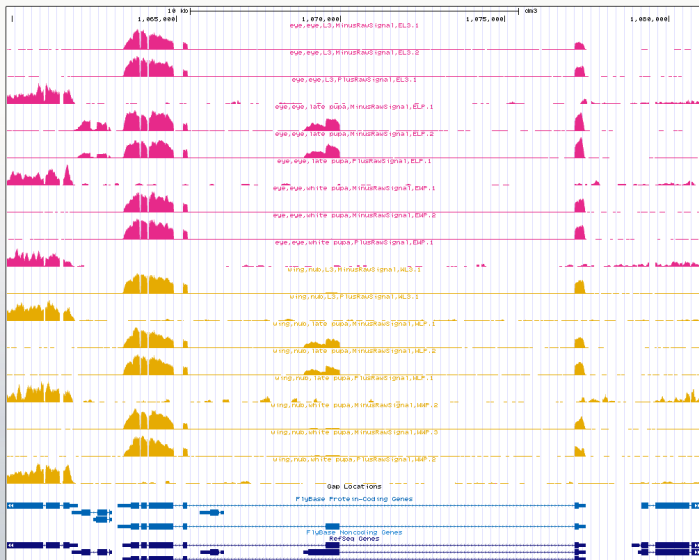
UCSC Genome Browser on *D. melanogaster* Apr. 2006 (BDGP R5/dm3) Assembly

move <<< << < > >> >>> zoom in 1.5x 3x 10x base zoom out 1.5x 3x 10x 100x

chr3R:1,059,849-1,080,992 21,144 bp.

go [More on-site workshops av](#)

chr3R (cBP) 

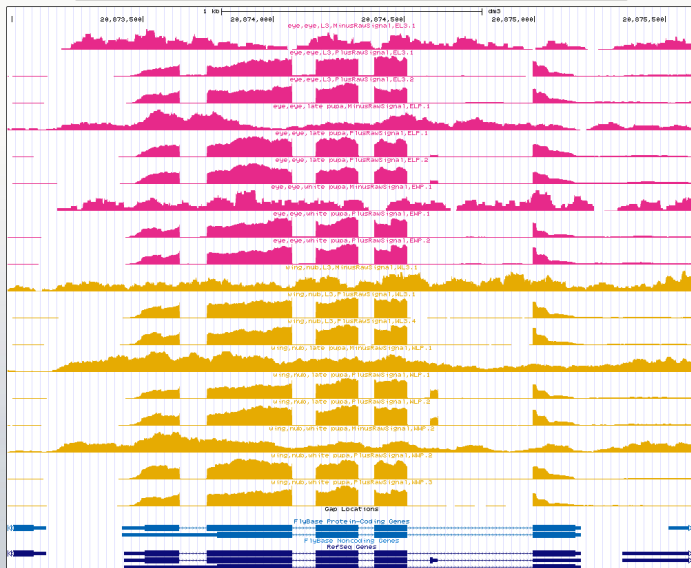


UCSC Genome Browser on *D. melanogaster* Apr. 2006 (BDGP R5/dm3) Assembly

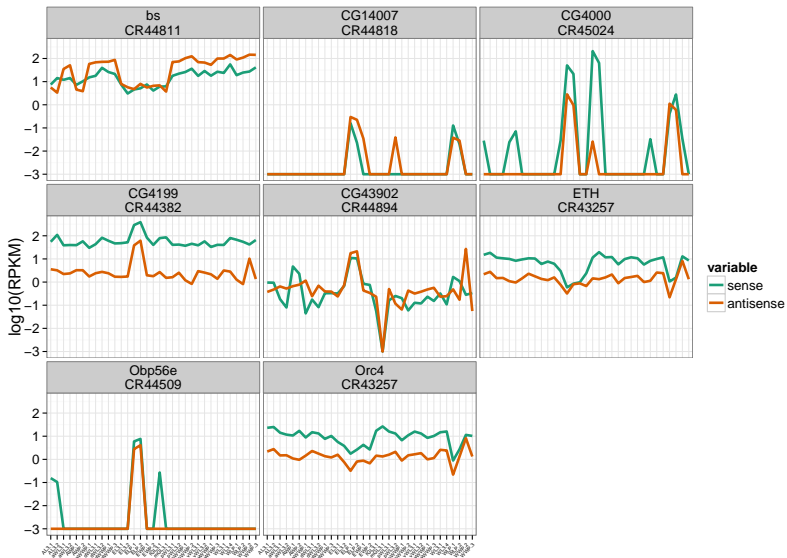
move <<< << < > >> >>> zoom in 1.5x 3x 10x base zoom out 1.5x 3x 10x 100x

chr3R:20,872,983-20,875,616 2,634 bp. go

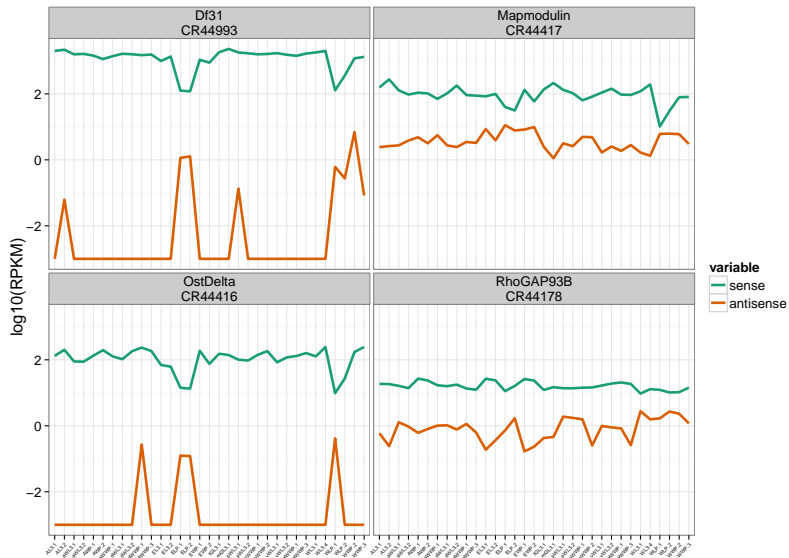
[More on-site workshops a](#)



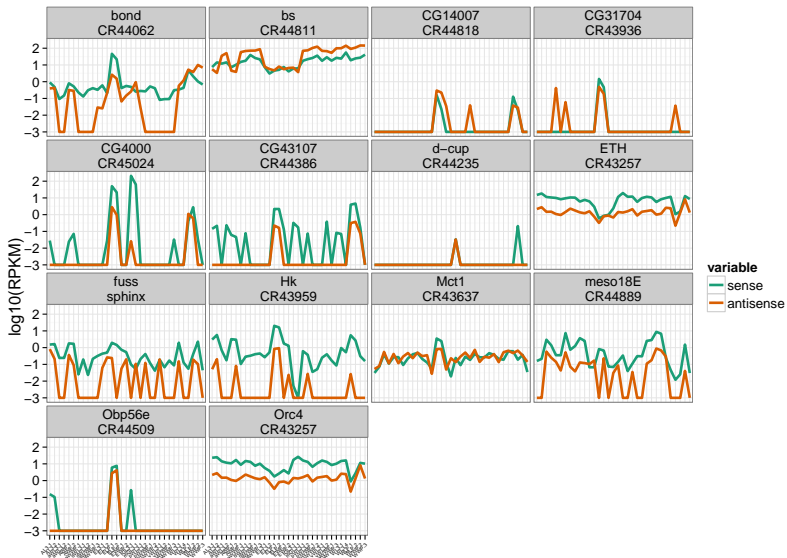
antisense - positively correlated



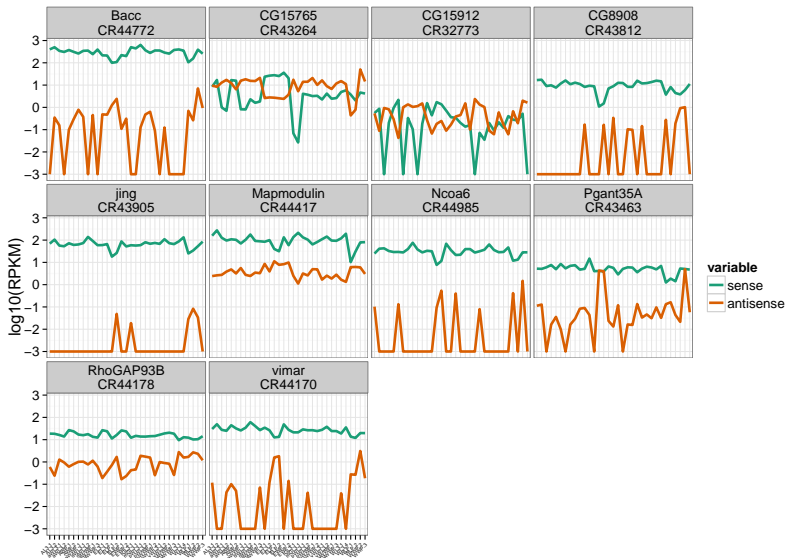
antisense - negatively correlated



antisense - positively correlated



antisense - negatively correlated



Overview of processed RNA-seq samples

